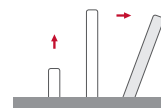


DynamicX2Talk

Aluminium retractable motorised monitor with integrated universal motorised lift system for “gooseneck” microphones



FEATURES

- Automatic 20° inclination
- Passive cover plate
- Interactive Setup Display
- Compatible with “gooseneck” microphones
- Standard XLR-3pin connection
- Adjustable microphone length
- Dynamic Light LED ring indicated microphone status
- Easy to install
- Maintenance free
- HDCP compliant
- Energy saving design
- Individual monitor addressing
- Integrated terminations switch
- Serial control & Remote diagnose

GENERAL

DynamicX2Talk monitors have been designed for installation into tables or desks. DynamicX2Talk is a state-of-the-art reliable, retractable, individually addressable and remotely diagnosable monitor which also integrate an independent lift system for “gooseneck” type microphones to be used at conference rooms, meeting rooms, board rooms, auditorium and public areas.

The monitor is silent, fast and extremely elegant with a modern and sober design, made of mechanised and anodised aluminium. The upper table cover plate integrates a mechanism to lift and retract “gooseneck” type microphones equipped with a LED ring which changes

color green to red, to indicate the willingness of the user to talk. Furthermore, the system can also integrate a full HD video camera, becoming a complete audio and video conference station, which can disappear within the desk, when no needed. DynamicX2Talk provides automatic tilting by using only one engine; a system which is protected by an international patent. Its passive cover plate prevents dirt and any kind of object from falling inside the mechanism and the lift system has different speed levels depending on the screen position, having as a result a harmonic drive and eluding abrupt movements. An independent lift for the microphone, with a stylish round hedge has been added to this solution and consequently, the user can choose to have only the screen, only the microphone, both or none.

TECHNICAL SPECIFICATIONS

Display

| | |
|------------------------------------|--|
| Size | FULL HD 21.5" TFT Active Matrix, widescreen |
| Resolution | 1920 (h) x 1080 (v) |
| Brightness | 250 cd/m2 |
| Contrast ratio | 1000:1 |
| Pixel | 0.2475 (h) x 0.2475 (v) mm |
| Viewing angle | 178° (h) / 178° (v) |
| Viewing area | 476.064 (h) x 267.786 (v) mm |
| LED backlight lifespan | 30.000 hrs |
| Response time | Tg-g 25ms |
| Temperature (operating/storage) | Operating 0°C – +40°C Storage -20°C – +60°C |

Materials

| | |
|-----------------------|--|
| Cabinet & Cover plate | Monitor surface in toughened glass with touch buttons and main housing in milled out of solid aluminium in an anodised surface finishing. DynamicTalk integrated. DynamicTalk is a universal motorised microphone lift system remotely controllable through RS 422 or GPI with a Dynamic LED Ring for "ready to talk" and "talk" indications |
|-----------------------|--|

Connectivity

| | |
|-----------------------|--|
| Input signal | DVI-I (1 input) – HDCP Compliant DVI-D (1 input) – HDCP Compliant |
| RJ45 CAT5 (with loop) | Addressable RS422 monitor control by AHnet protocol |
| GPI (SubD9) | Movements control |

DynamicTalk Control

| | |
|---------------------|-----------------------------|
| Up/Down Control | Button on upper cover plate |
| | GPI contact closer |
| | RS-422 (RJ45 CAT 5) |
| Microphone control | Button on upper cover plate |
| Customised function | Button on upper cover plate |
| GPI/O | LEDs control and switch |

Electrical

| | |
|-------------------------|----------------------------|
| Two ext. power supplies | 100-240Vac, 47/63Hz, 12Vdc |
| Display consumption | 80W |
| DTalk consumption | 10W |

Mechanical

| | |
|----------------------|--|
| Dimensions | 736 x 95 x 602 mm [28.97"x3.7"x23.7"] |
| Weight | 24 Kg / 52.9 lbs |
| Shipping Dimensions: | |
| Weight | 25.8 Kg / 56.8 lbs |
| Shipping Box | 812 x 167 x 707 mm |

OPTIONS

- HDMI/ DynamicLoop
- DynamicShare
- Stainless steel box for keyboard and mouse
- Matte cover plate
- Touch screen
- USB camera
- Composite video camera
- HD-SDI camera
- USB integrated on cover plate
- 2 USB integrated on cover plate

- USB power integrated on cover plate
- Customised cover plate with speaker, voting system, USB connector
- Prepared for underneath installation, cover plate prepared to be veneered
- Additional customised laser engraved logotype on the cover plate
- Monitor housing anodised in different colours
- Adjustable tilt
- Custom microphone connection

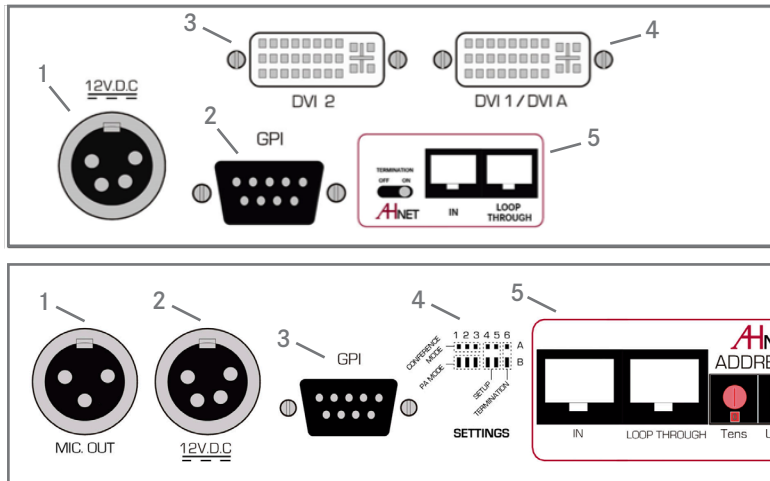
CERTIFICATIONS

- CE

WARRANTY

- 5 years limited warranty
- 2 years general warranty

CONNECTIVITY PANEL



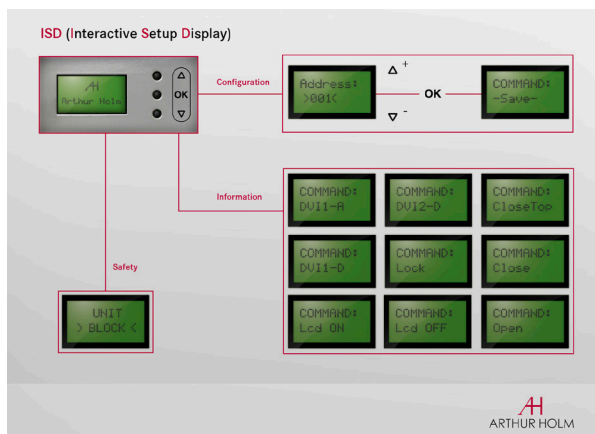
MONITOR CONNECTIVITY

- 1- Power input
- 2- GPI control
- 3- DVI 2 video input
- 4- DVI 1 / DVI A video input
- 5- AHnet control interface

DYNAMICTALK CONNECTIVITY

- 1- Microphone output
- 2- Power input
- 3- GPI control
- 4- DynamicTalk configuration settings
- 5- AHnet control interface

INTERACTIVE SETUP DISPLAY



ISD

- 1- Configuration
- 2- Information
- 3- Safety

ARCHITECT'S SPECIFICATIONS

Retractable monitor with retractable microphone system, providing an integrated conference product. The screen and the microphone lifts can be operated independently.

Low voltage professional electrically retractable 22" monitor with 20 degrees of automatic inclination. Solid block of aluminum monitor housing in natural anodised finishing, with rounded corners design. Front anti-reflective black-edged glass. Passive cover plate in brushed stainless steel for enhanced reliability. Lifting and tilting with a single electrical engine for increased reliability. DVI-I and DVI-D connectors. HDCP compliant inputs. Compatible with AHnet open protocol over RS-422, allowing independent remote control of up to 30 units over a daisy-chain CAT-5 or CAT-6 line. Additional control by means of the buttons integrated on the cover plate that can be activated or deactivated by using the AHnet. Easy to read Interactive Set-Up Display (ISD) 1,6"LCD display for address setup and status monitoring. Safety system that detects obstructions, stopping the unit. External power supply with 4-Pin XLR4 connector. Bottom connectivity for easy access and

removal of monitor without disconnecting the monitor. Enhanced clearance between monitor housing and the floor. Adjustable mechanical parameters through AHnet or ISD for calibration and adjustment of mechanics. Diagnostic readout on ISD for increase service and support.

Low voltage professional retractable system for microphones up to 400/500/600mm long (upon request). Square brushed stainless steel cover plate integrated into the monitor's cover plate. Rounded microphone opening cover lid, and three buttons for system operation. Programmable green and red LED ring for microphone status indication. Patented design to avoid microphone damage or blockage when retracting. Operation modes for using standard microphones and conference systems. Compatible with AHnet open protocol, allowing independent remote control of up to 30 units over a daisy-chain CAT-5 line. Additional control by means of the buttons integrated on the cover plate and the general purpose interface inputs and outputs. External power supply

ARTHUR HOLM

Albiral Display Solutions SL · Fàtima, 25 Sant Hipòlit de Voltregà 08512 Bcelona, Spain · +34 938 502 376 · marketing@arthurholm.com
www.arthurholm.com

Arthur Holm is a registered brand of Albiral Display Solutions SL. Specifications subject to change without previous notice.

