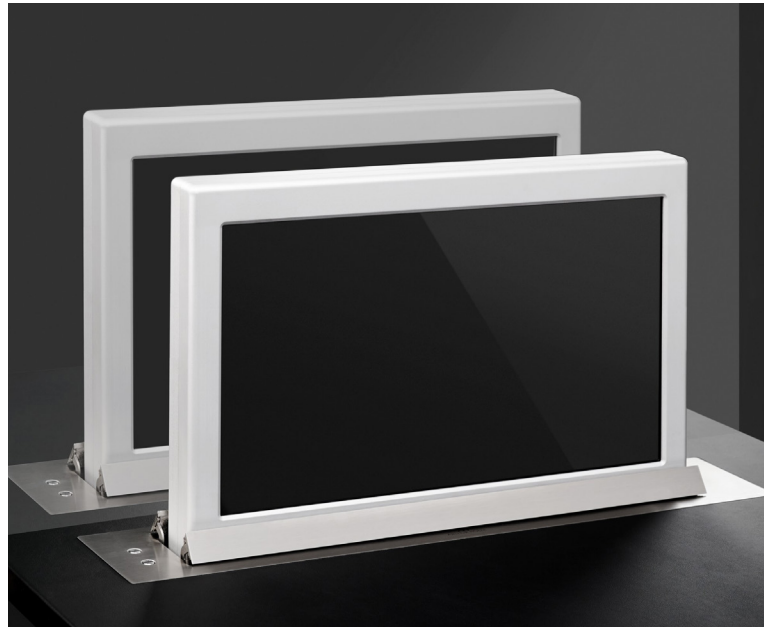
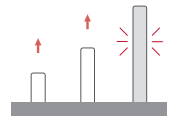


Dynamic 1Twin

Aluminium retractable double sided motorised monitor



FEATURES

- 17.3" motorised monitor
- Double sided display
- Passive cover plate
- Interactive Setup Display
- Maintenance free
- HDCP compliant
- Energy saving design
- Serial control & Remote diagnose

GENERAL

Dynamic1Twin monitors have been designed for installation into tables, desks or counters.

Dynamic1Twin is a vertically retractable system with double screen. Two monitors are placed back to back in a compact anodised aluminium frame; allowing for the display of different content for a 2 way communication in reception desks, information counters or in meeting and conference room tables with limited space. The screens are only viewed when required, disappearing inside the table desk by the mere push of a button or by remote control.

Dynamic1Twin has an extremely fast lift system with a very low noise level. Very easy to install, these monitors require no maintenance. To protect the user, Dynamic1Twin are equipped with a safety system which stops the movements in case of resistance detection. They are remotely controllable and diagnosable through the ERT interfaces in a very easy and effective way.

TECHNICAL SPECIFICATIONS

Display

Size	FULL HD, 17.3" TFT Active Matrix widescreen
Resolution	1920 (h) x 1080 (v)
Brightness	400 cd/m2
Contrast ratio	600:1
Pixel	0.1989 (h) x 0.1989 (v) mm
Viewing angle	60°/80° (u/d) / 80°/80° (l/r)
Viewing area	381.888 (h) x 214.812 (v) mm
LED backlight lifespan	50.000 hrs
Response time	Tr 37 ms, Tf 3 ms
Temperature (operating/storage)	Operating 0°C – +40°C Storage -20°C – +60°C

Materials

Frame	Anodised Aluminium
Cover plate	Stainless steel, matt or prepared for underneath installation (to be veneered or for table hedge). Electrical powered lift system with variable speed

Connectivity

Input signal	DVI-I (1 input for each panel) – HDCP Compliant DVI-D (1 input for each panel) – HDCP Compliant
RJ45 CAT5 (with loop)	Addressable RS422 monitor control by AHnet protocol
GPI (SubD9)	Up/Down control

Control

RJ45, RS-422 (I/O)
Addressing
Termination switch
GPI
IR Remote control (monitor adjustments): 1/5

Movement's Control

User interface on monitor	(Up/Down)
Remote	RS-422 I/O/GPI

Electrical

Low voltage (external power supply)	100-240Vac, 47/63Hz, 12Vdc
Power consumption	80W

Mechanical

Monitor Dimensions:	
Screen	433 x 274 x 41.7 mm [17" x 10.8" x 1.6"]
Upper cover plate	540 x 95 x 3 mm [21.3"x3.74"x0.12"]
Housing below the table	531.4 x 591 x 83.5 mm [20.9" x 23.3" x 3.3"]
Weight	20.4 kg / 44.9 lbs
Shipping Dimensions:	
Weight	21.4 kg / 47.1 lbs
Shipping Box	652 x 177 x 727 mm

OPTIONS

- DynamicLoop
- DynamicShare
- Matte cover plate
- Built in DynamicTalk
- Motorised retractable synchronised single microphone
- Dual motorised synchronised microphones
- USB integrated on cover plate

- USB power integrated on cover plate
- Prepared for underneath installation, cover plate prepared to be veneered
- Customised cover plate with speaker & voting system
- Customised laser engraved logotype on the cover plate
- Monitor housing anodised in different colours

CERTIFICATIONS

- CE

WARRANTY

- 5 years limited warranty
- 2 years general warranty

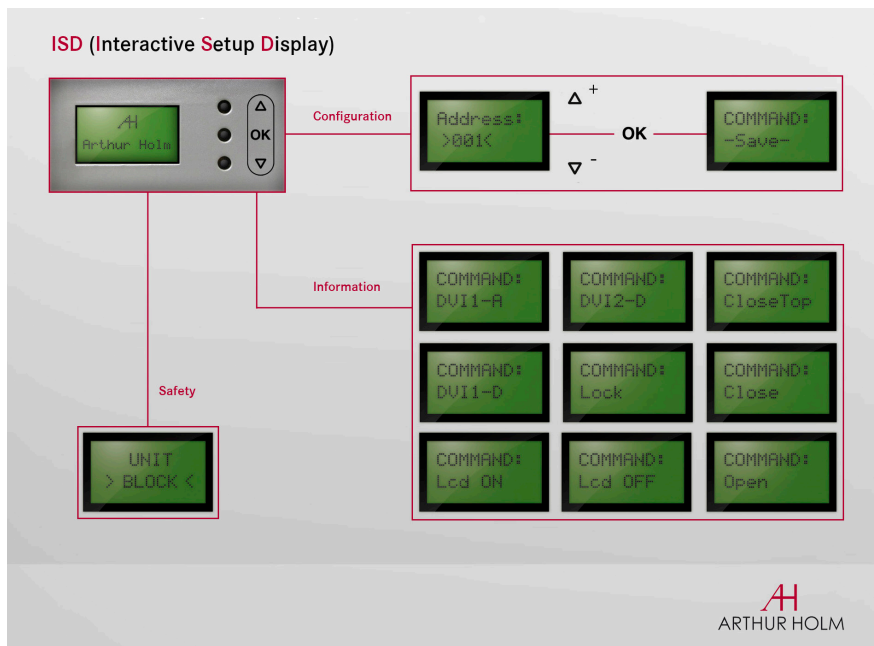
CONNECTIVITY PANEL



CONNECTIVITY

- 1- Power input
- 2- GPI control
- 3- DVI-D video input - digital (Screen 1)
- 4- DVI-I video input - analog/digital (Screen 1)
- 5- AHnet control interface
- 6- DVI-D video input - digital (Screen 2)
- 7- DVI-I video input - analog/digital (Screen 2)

INTERACTIVE SETUP DISPLAY



ISD

- 1- Configuration
- 2- Information
- 3- Safety

ARCHITECT'S SPECIFICATIONS

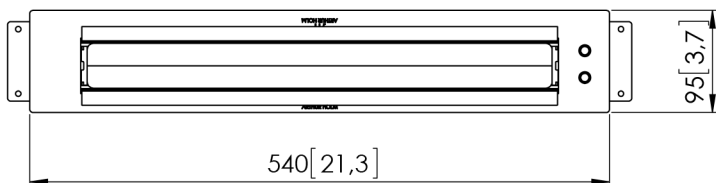
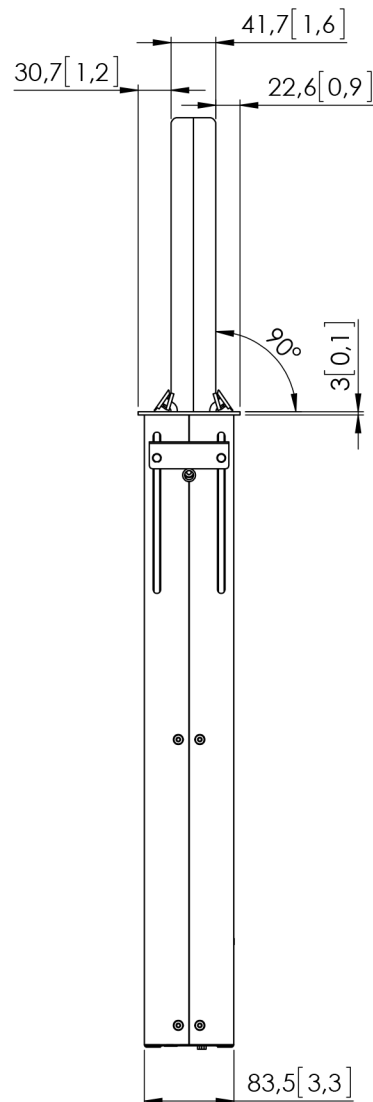
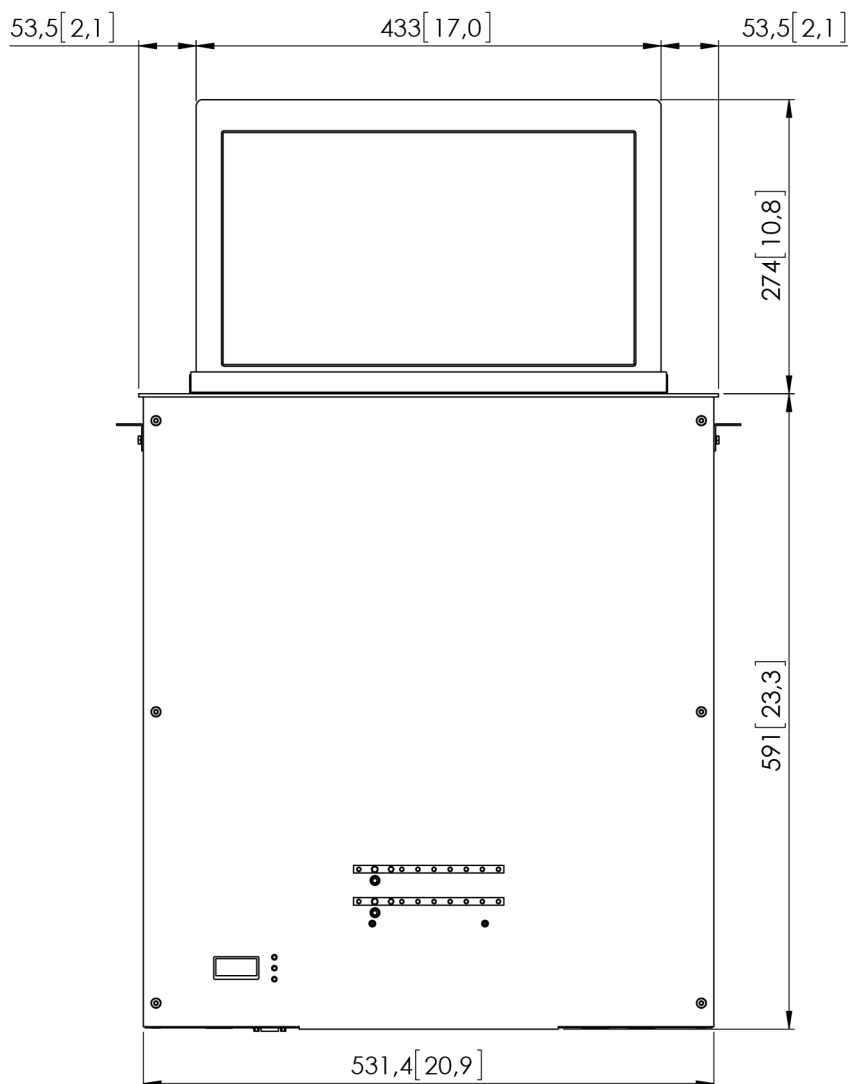
Low voltage professional 17.3" electrically retractable dual monitor. Double back to back mounted screens, inputs signals shall be routed independently. Aluminium screen housing, natural anodized finishing with square corners design. Passive cover plate in brushed stainless steel for enhanced reliability. Lifting movement with a single electrical engine for increased reliability. DVI-I and DVI-D connectors. HDCP compliant inputs.

Compatible with AHnet open protocol over RS-422, allowing independent remote control of up to 30 units over a daisy-chain CAT-5 or CAT-6 line. Additional control by

means of the buttons integrated on the cover plate that can be activated or deactivated by using the AHnet. Easy to read Interactive Set-Up Display (ISD) 1,6"LCD display for address setup and status monitoring. Safety system that detects obstructions, stopping the unit. External power supply with 4-Pin XLR4 connector. Bottom connectivity for easy access and removal of monitor without disconnecting the monitor. Monitor housing total depth is 591 mm, plus additional spacing for connectors. Adjustable mechanical parameters through AHnet or ISD for calibration and adjustment of mechanics. Diagnostic readout on ISD for increase service and support.

GENERAL DIMENSIONS

AH17D1HDA2F



ARTHUR HOLM

Albiral Display Solutions SL · Fàtima, 25 Sant Hipòlit de Voltregà 08512 Bcelona, Spain · +34 938 502 376 · marketing@arthurholm.com
www.arthurholm.com

Arthur Holm is a registered brand of Albiral Display Solutions SL. Specifications subject to change without previous notice.